

ALTARPIECES

Pujals dels Pagesos, Girona
2018-2020

Altarpieces is about the transformation of an attic inside a traditional farmhouse from the 18th century into a small apartment for temporary stays.

The intervention focuses on the design of an autonomous central core and the insertion of some bespoke furniture in the existing openings.

TIPOLOGY

Residential - Refurbishment

AREA

49m²

PROMOTOR

Private

CONSTRUCTOR

Fusteria Sais s.l.
Gener Casadevall s.a.
Instal·lacions Caifer s.l.
Construccions Pere Morgadas

COLLABORATORS

Arnau Arboix Sala, project manager
Raül Elias Bramon, architect

PHOTOGRAPHY

José Hevia

Selected in the Interior Design FAD Award 2021.





F1
Bench seat. *El moble català*, Josep Mainar, F. Català Roca.
Casa Ventós, Olot.

F2
Bridal box with a scene of the Annunciation inside its lid.
El moble català, Josep Mainar, F. Català Roca.
Museu d'Arts Decoratives, Barcelona.

F3
Ortophotomap of the site of Can Riera.
Institut Cartogràfic i Geològic de Catalunya (ICGC), 2016.

*Altarpieces
draws on the
simple wisdom
of traditional
furniture and its
ability to shape
a small universe
of possible
environments
around it.*

We start from the imagery of the beautiful wooden envelopes that have historically served to give a warm character to the interior spaces generated within the solid but also icy stone walls of old buildings.

The new central volume acts as a bedhead and contains the wardrobe and the bathroom inside, while organizing all of the functions and uses around it.

Each of the doors and windows hosts, within the considerable thickness of the old walls, a different unfolding piece that welcomes a variety of activities: a dresser, a working-dining table, a bay window or a serving hatch from the main room of the house.

A system of steel hinges, purposefully designed and produced for this project, allows all of the necessary movements of the oak wood planks to configure a different inhabitable piece of furniture according to every use and situation.

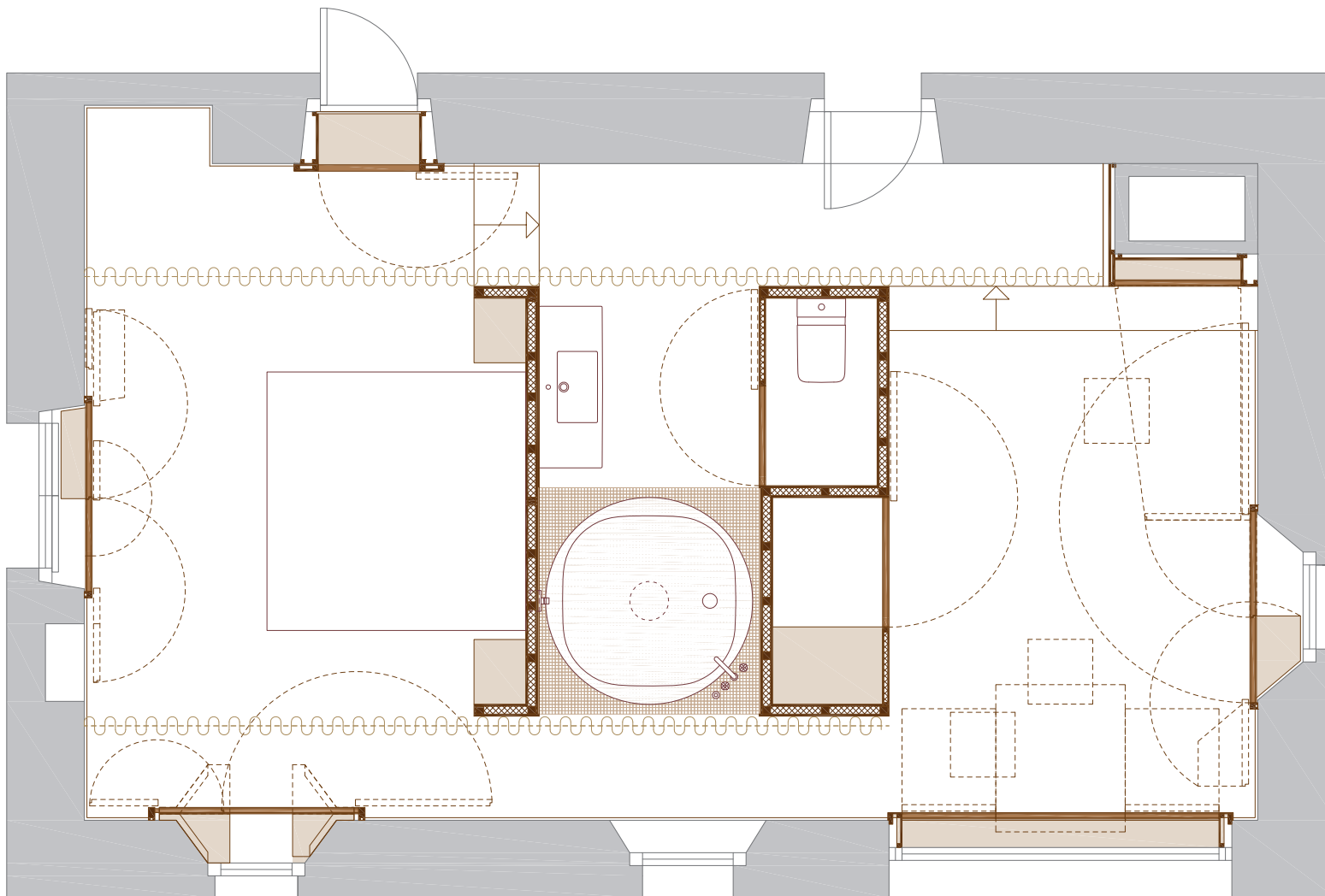
Altarpieces allows all possible rooms to exist within a single space, in a collection of domestic scenes close to the natural light and in contact with the privileged landscape of the place. When the guests leave the house, all the shutters are folded over the old windows and the room remains empty, silent and dark until its new occupation.

F1
Interior of the monastery the Grande Chartreuse, Saint-Pierre-de-Chartreuse, França.

F2
View of the attic space prior to the refurbishment.

F3
The unfolding furniture as an activity generator.





F1
Plan.

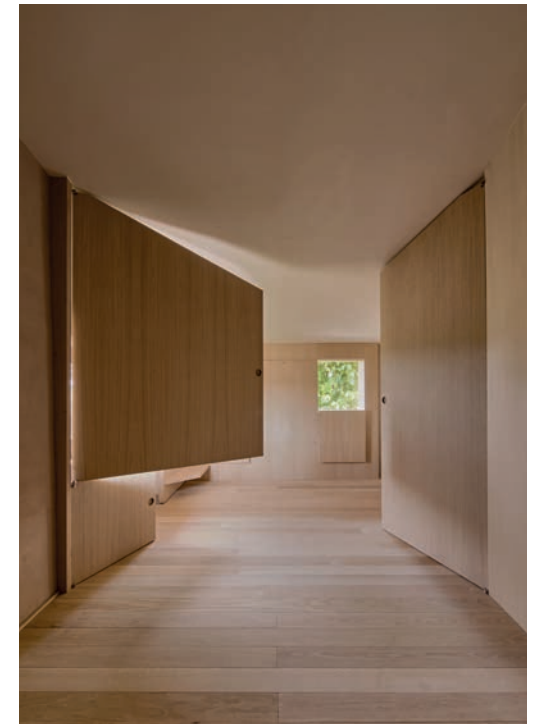
0 0.25 1m





F1, F2, F3

Unfolding sequence of the day area openings' furniture.



F4

The shutters in the panoramic window become a work-dining table open to the landscape.



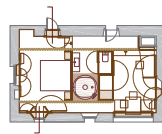
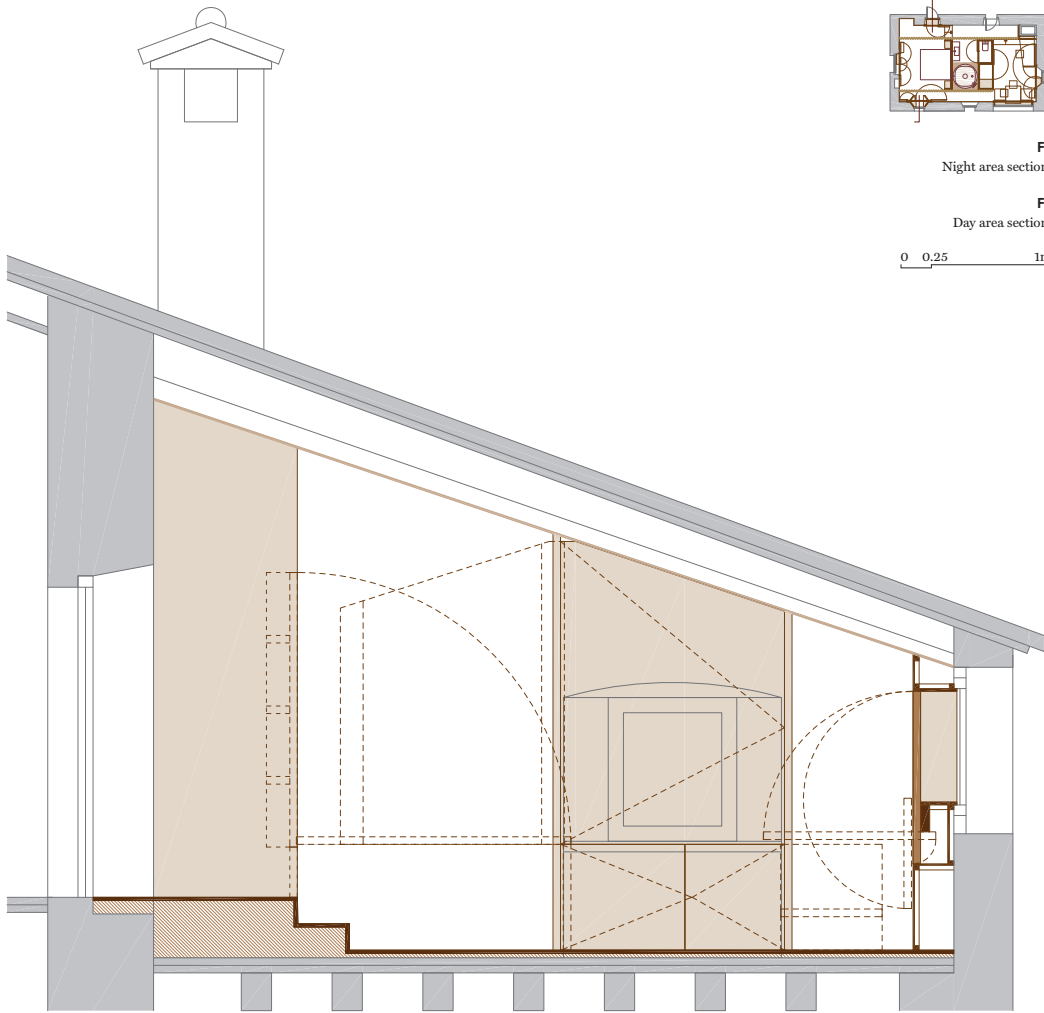


F1
The purpose-built steel hinge system allows each of the
desired deflections.

F2
View of the closed window seat in the night area.

F3
View of the unfolded window seat in the night area.

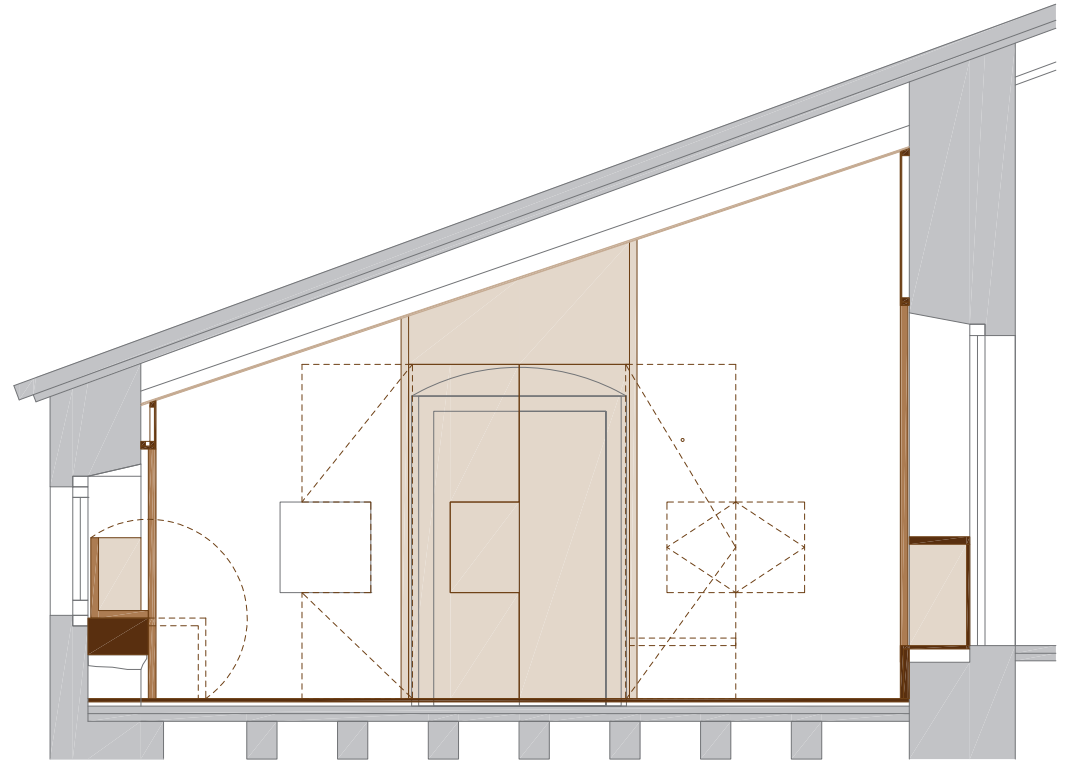


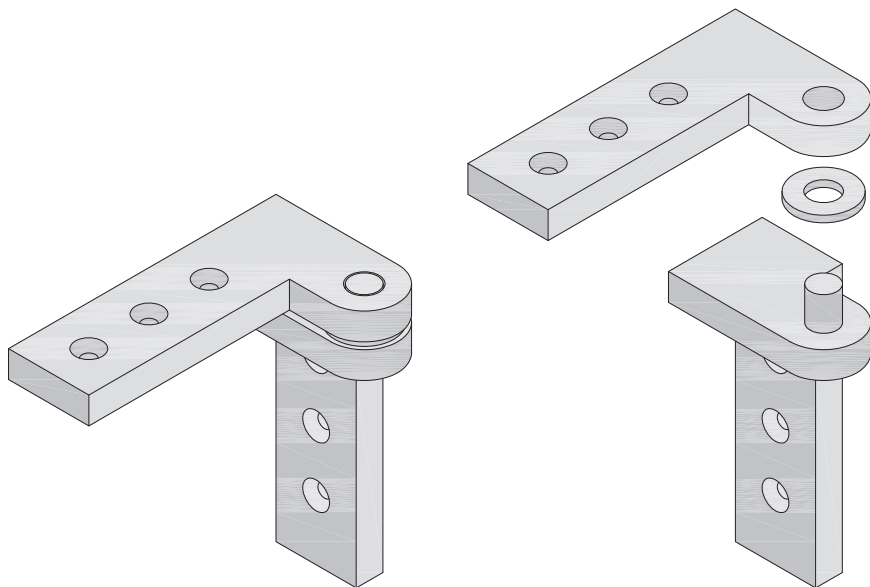


F1
Night area section.

F2
Day area section.

0 0.25 1m



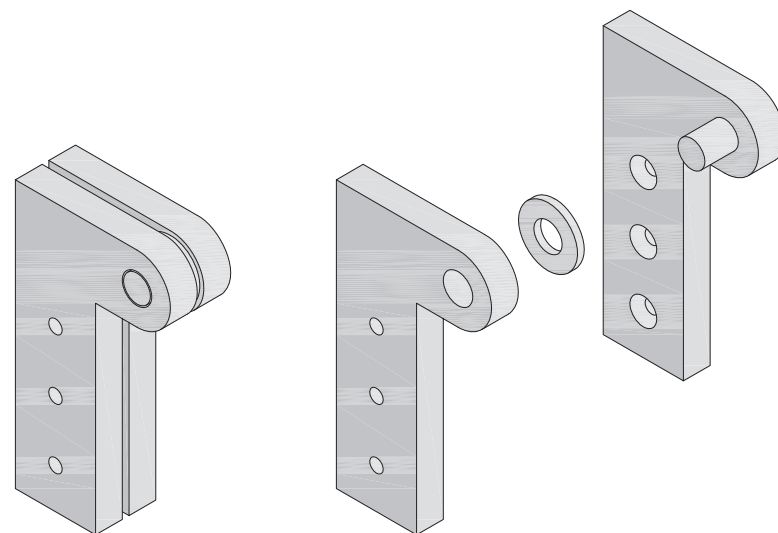
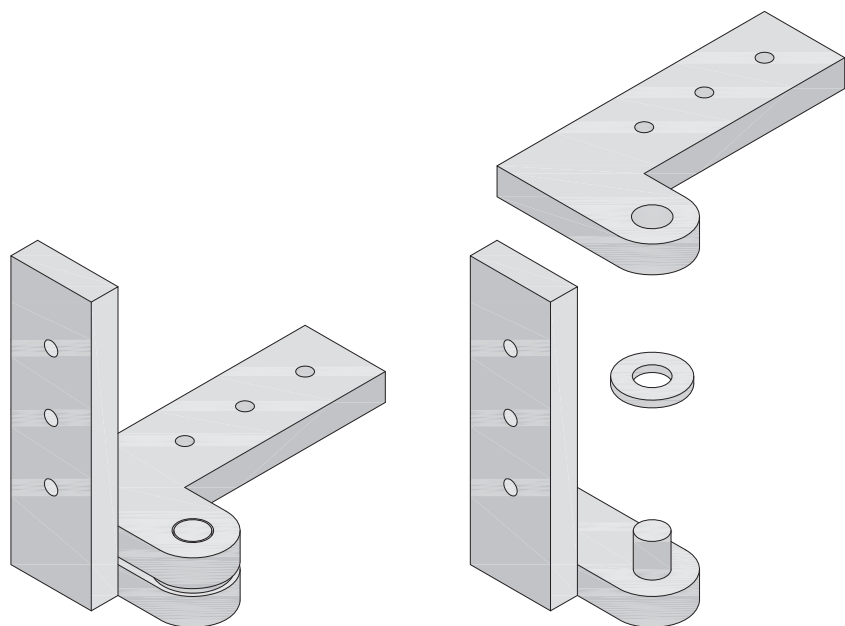


F1
Type 1 superior hinge.

F2
Type 2 inferior hinge.

F3
Type 4 right hinge.

0 10 50mm





The thickness of the stone walls houses the wooden elements that, when deployed, allow for a variety of uses for each space and connects it with the environment.

F1

The unfolding of the furniture hosts different activities in contact with the natural light.

F2

View of the central core that functions as a headboard and the plate-passing cupboard.

F3

The bathroom is found inside the new central wooden volume.

