

# POND

Sant Joan les Fonts  
2018-2020

Time has gifted the inhabitants of an old house in La Garrotxa the possibility of building a pond to refresh in during the hot summer days. The house, a simple, square and compact volume, was built by an ancestor of its inhabitants and was later expanded with a beautiful south-facing glazed gallery. If there is something that characterizes the original building, though, it is the presence of exposed brick on the corners and the exterior ceramic floors, allowing the house to naturally extend into the garden during many seasons of the year.

The proposal for the pond seeks to generate reverberations with this universe of fired clay that defines the place since its original conception.

## TIPOLOGY

Exterior spaces - landscape

## AREA

133 m<sup>2</sup>

## PROMOTOR

Private

## CONSTRUCTOR

Construccions Joan Molins i Fabrega s.l.  
Piscines Graf s.l.

## COLLABORATORS

Raül Elias, project leader

## PHOTOGRAPHY

José Hevia

Finalist in XV Spanish Biennial of Architecture and Urbanism 2021.  
Selected in the City and Landscape FAD Award 2021.







*The project intends to bring back the long tradition of public laundry ponds of the Mediterranean houses and villages.*

**F1**  
Ortophotomap of the site.  
Institut Cartogràfic i Geològic de Catalunya (ICGC), 2019.

**F2**  
Photograph of the public laundry space Sant Sebastià in Sant Feliu de Pallerols, 1967.  
Credit: Ajuntament de Girona, Josep Buil Mayral.

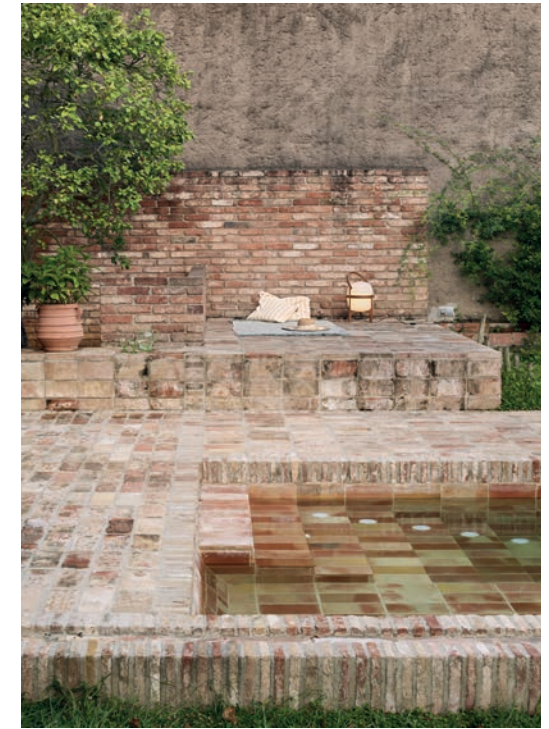
**F3**  
Image of the public laundry pond Tres Fonts, Roda de Ter, 1940s.  
Credit: Arxiu Memòria Històrica Roda de Ter.





Nested on the garden area that guarantees both the highest sun exposure and the maximum possible privacy, the project extends horizontally to configure an area for bathing, playing, reading and resting sheltered by the wall at the end of the property. A small inhabitable volume is attached to the existing garage to host the needed machinery and an open-air changing room. Finally, a coping brick canal made of reclaimed pieces allows irrigation to circulate throughout the entire garden.

A simple set of planes unfolds on the ground to conform an inhabitable ceramic topography amid the lushness of this fertile retreat.



**F1**  
Image of a pond in Alhambra de Granada.  
Credit: Patronato de la Alhambra y Generalife.

**F2, F3**  
Bathing, recreation, reading and rest area protected by the wall that surrounds the property with the existing house in the background.







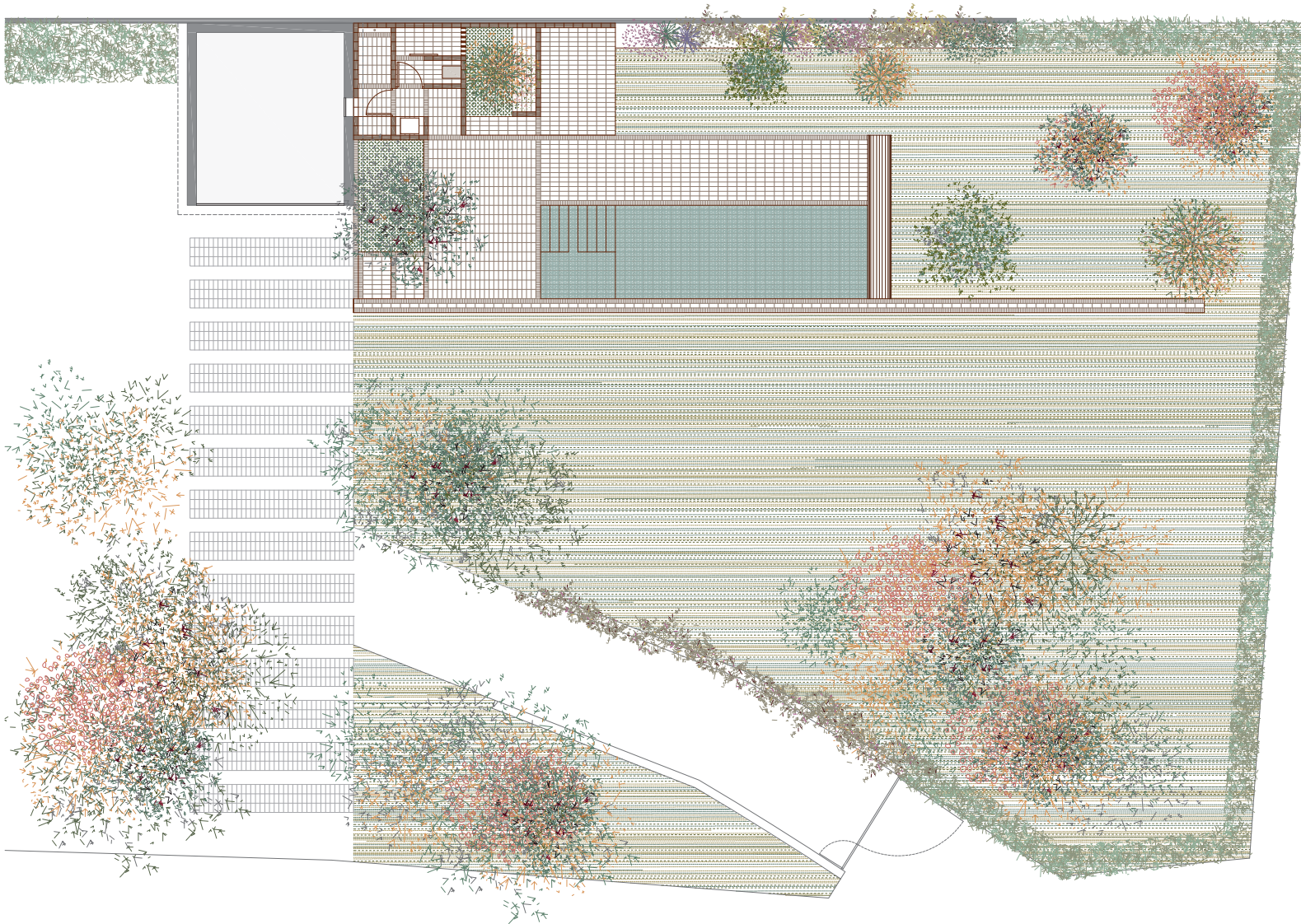
**F1**

Materiality and texture of the solid bricks recovered in different sizes and colours.

**F2, F3**

Both the pond and the open-air changing room are located with the desire to preserve the existing vegetation: the laurel, quince, magnolia and loquat define the extent and location of the ceramic topography and the rose garden colonizes the wall that frames the old stone sink.





**F1**  
Garden plan.







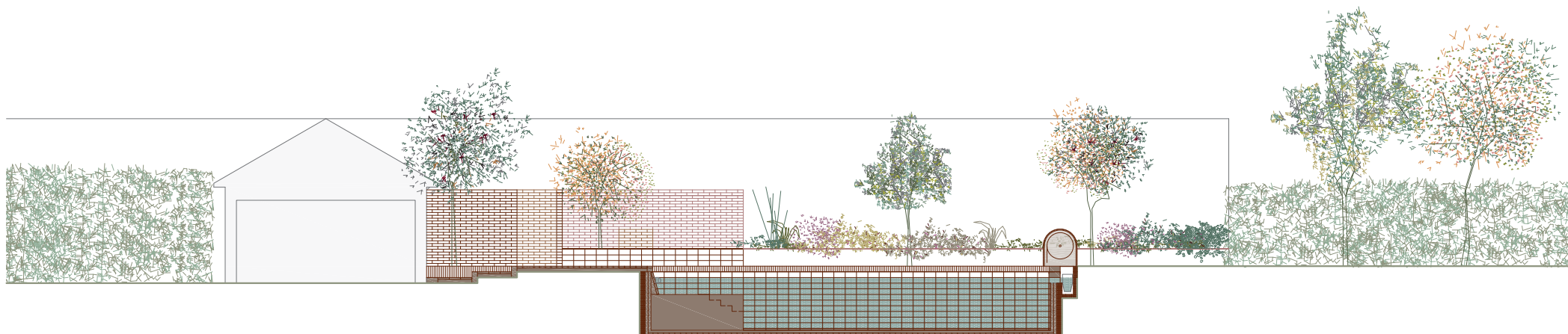
**F1**  
Acces to the open air changing room.

**F2**  
Frontal view of the new ceramic topography, the pond and the garden's brickwork irrigation channel.

*The chromatic and size diversity of the recovered pieces along with the varied brickwork are an essential part of the continuity with the spirit of the place.*



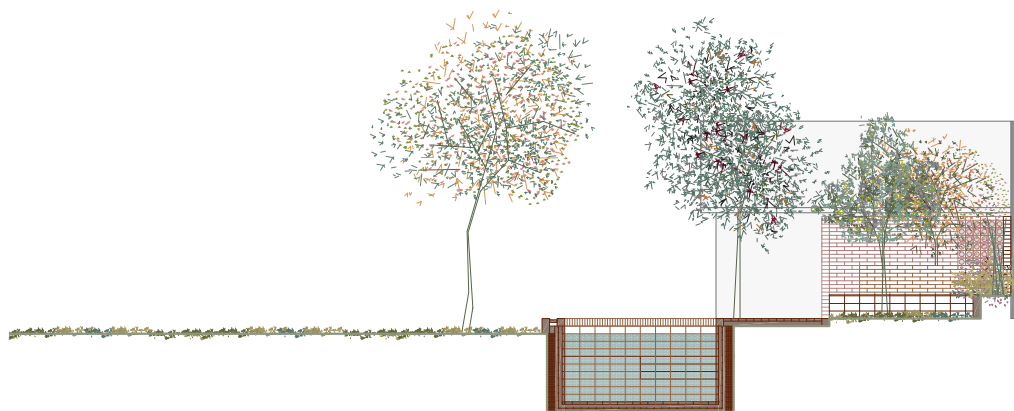
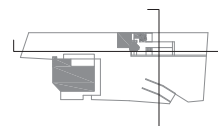


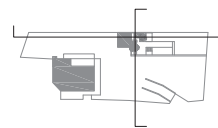
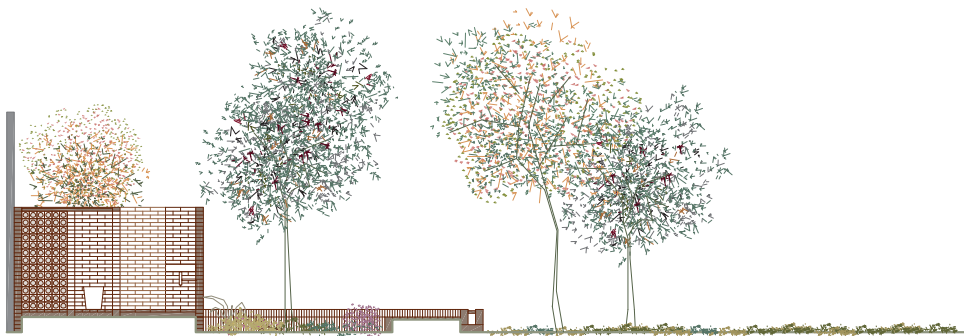


**F1**  
Longitudinal section of the pond.

**F2**  
Transversal section of the pond.

0 1 5m

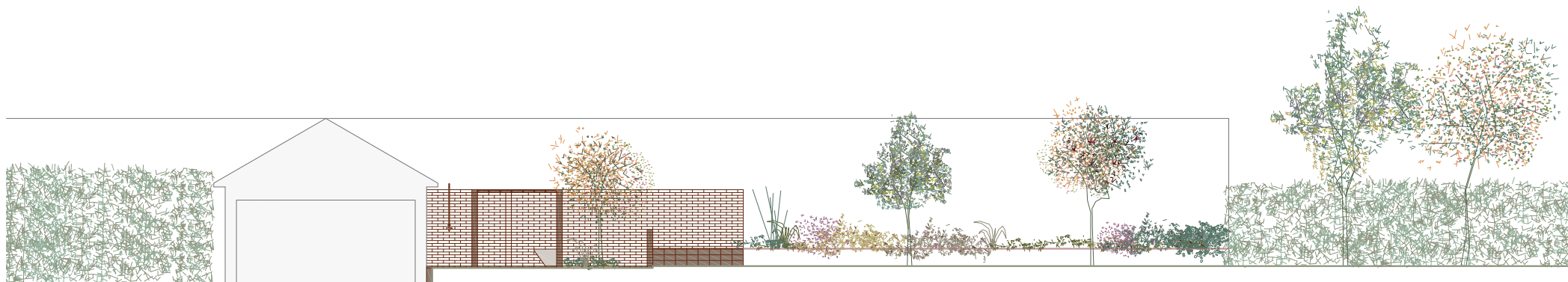




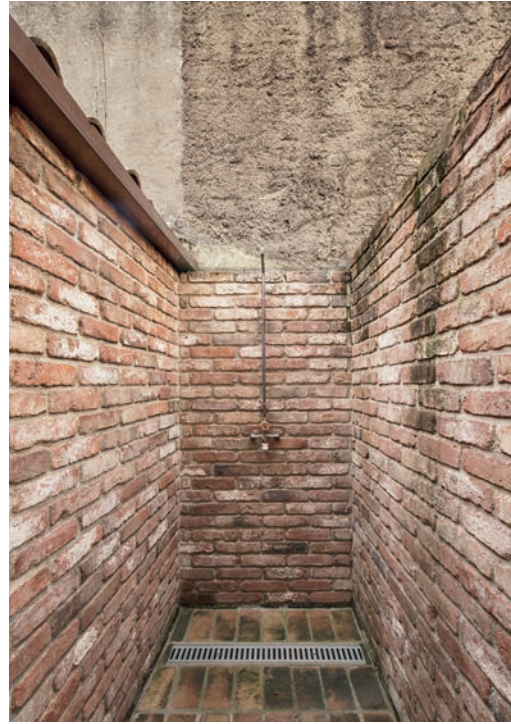
**F1**  
Transversal section of the changing room.

**F2**  
Longitudinal section of the changing room.

0 1 5m







**F1, F2, F3**  
Views of the open air changing room.